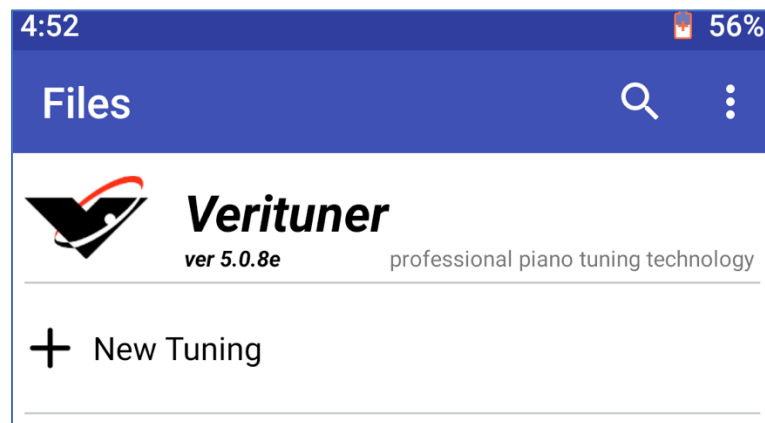


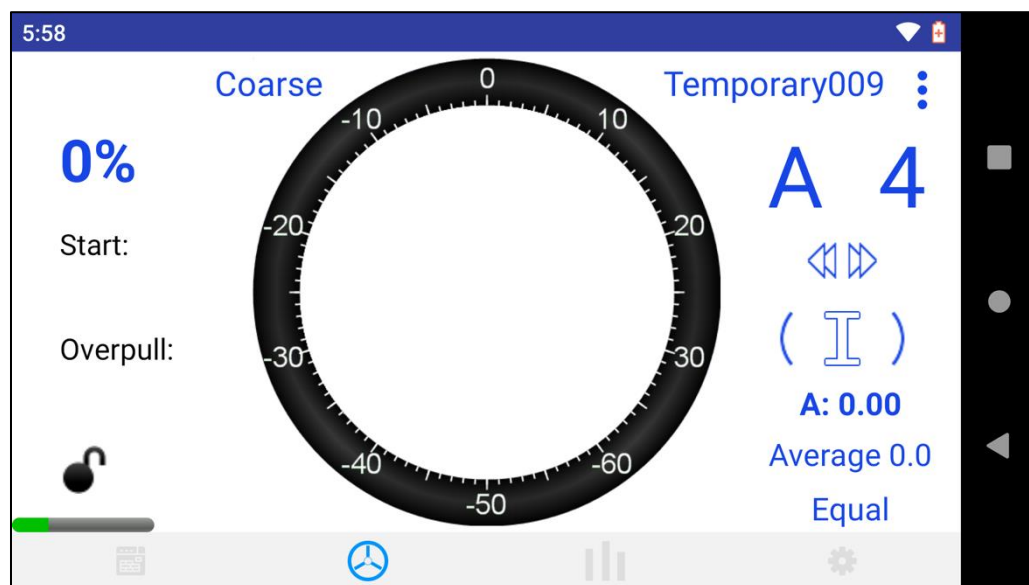
QuickStart Tuning

Eager to tune your first piano with the Verituner? If you want to pass on the details for now, give these streamlined steps a try. Be aware that this QuickStart applies to typical tuning situations. If, for example, you have special circumstances such as the need to raise the pitch greater than 50 cents or you want to use an alternate tuning sequence, consult the User Guide for additional guidelines and steps.

1. Tap the Verituner app.
2. Tap **+** New Tuning.

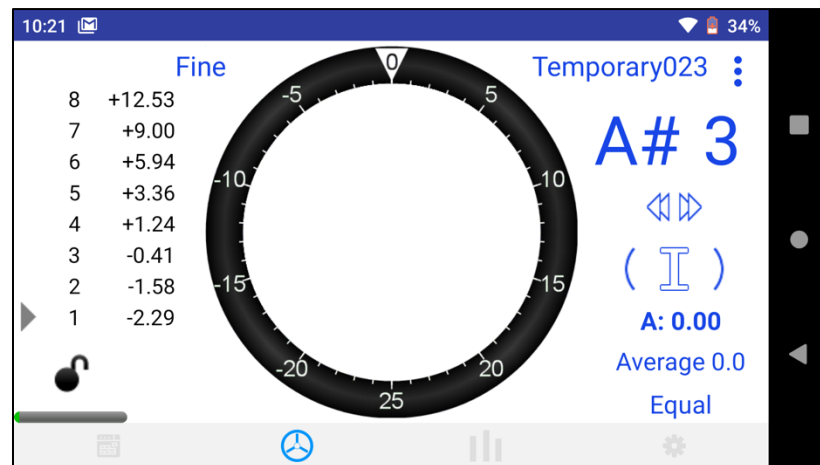
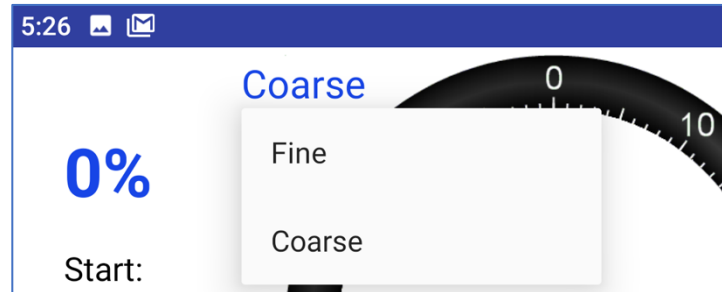


3. Tap Save to accept the default tuning settings. This takes you to the Coarse tuning screen.

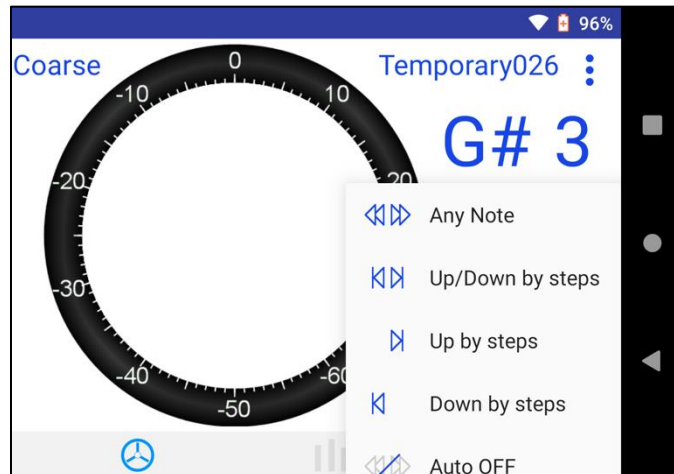


4. Play several notes in different parts of the piano, muting so that only one string is open, and observe the piano's pitch level. Decide whether a pitch raise or lower will be needed.
5. If a pitch correction is necessary, tap **0%** to select the desired amount of overpull (from three preset values). This pass will be done in Coarse tuning mode. (See the User Guide for more detailed steps).

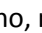

If the piano's pitch is close enough to fine tune, tap Coarse and then tap Fine on the popup menu to switch to Fine tuning.

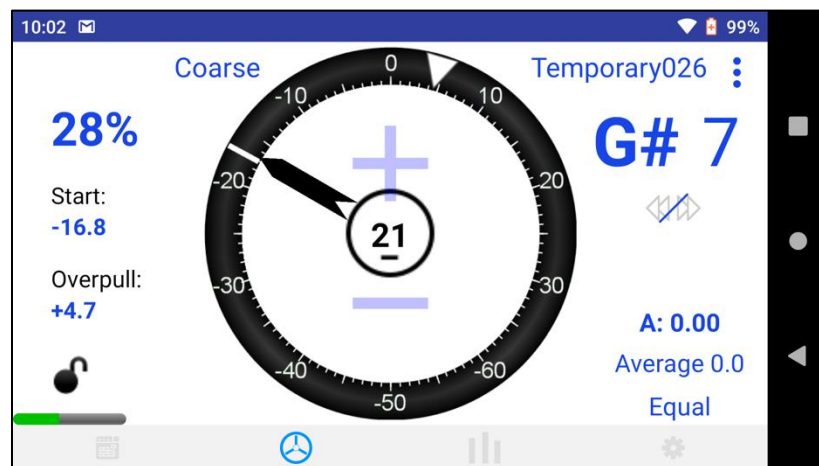


6. Tune A4 first and then A3, as in aural tuning. While tuning with the Verituner, tune each note first with only one string open. Tune the note until the spinner stops. In **Coarse** tuning (pitch raise or lowering), tune to the target ∇ on the spinner ring. Unisons can be tuned aurally, or each string can be individually tuned to the Verituner.
7. Play A#3 and then tap \lll and select \lll on the popup menu to change AutoNote to Up/Down by steps.



8. Starting with A#3, tune all the notes between A3 and A4 to complete the Verituner's temperament octave. Continue upward to C8; then tune downward from G#3 to A0. (For further details on optimal tuning sequences, see the User Guide.)

NOTE: If, at the extreme ends of the piano, note recognition is less accurate, tap  and tap  Auto OFF, and select notes manually. Manual note switching is performed by tapping either the note name or octave number and then tapping the + or - .



9. If you just completed a pitch correction pass, tap Coarse and then tap Fine on the popup menu to switch to Fine tuning.

Tune your final pass in Fine tuning mode.

